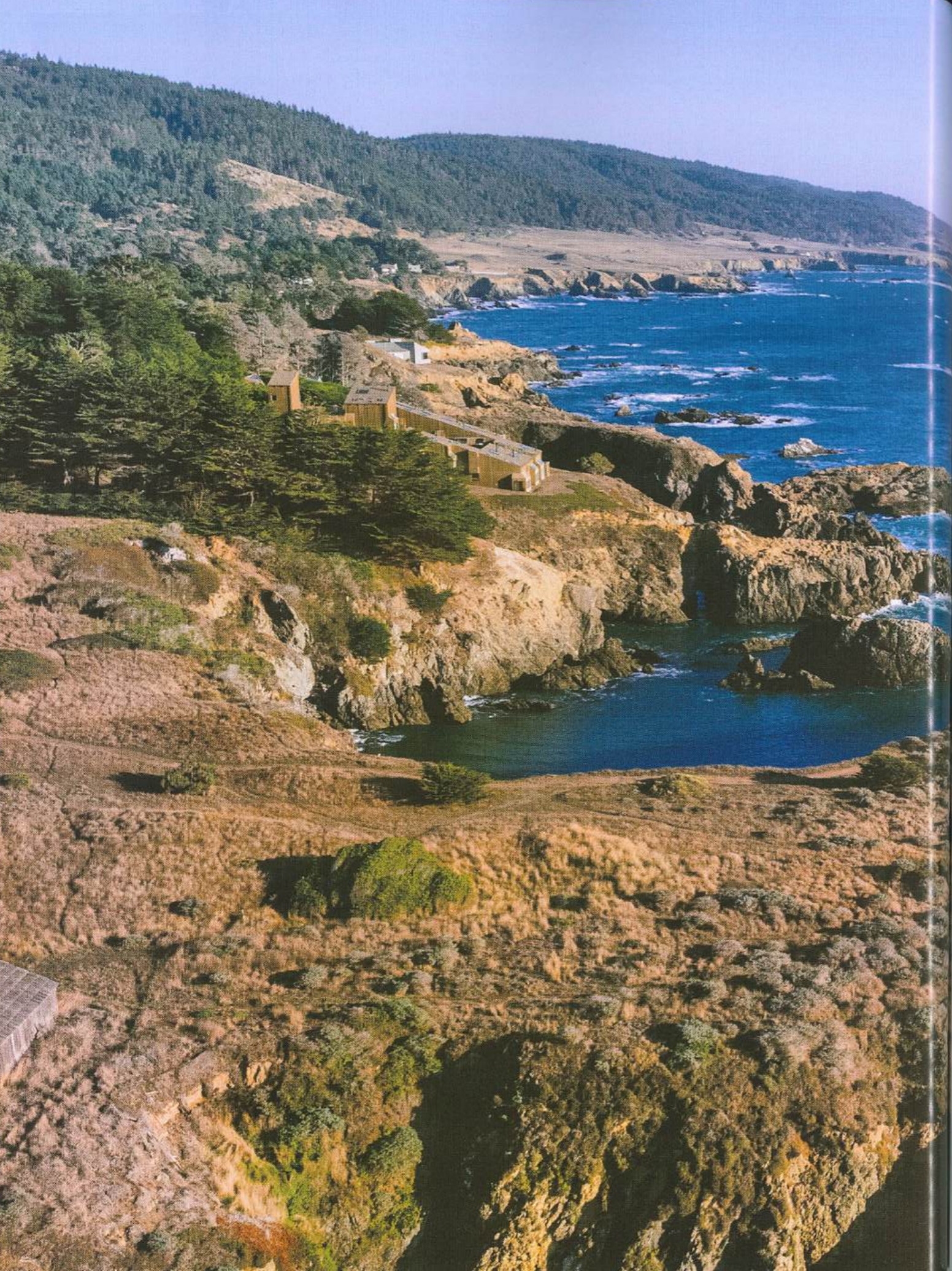


MILIEU



SUMMER 2026



JOURNEY



This Land Is Your Land

A stay at California's Sea Ranch is about interacting directly with all of the region's main elements: ocean tides, redwoods, wildflowers, fields, meadows, fresh farm produce—and even the occasional whale

WRITTEN BY *Laurie Warner* PHOTOGRAPHY COURTESY OF *Sea Ranch Lodge and Adam Potts*

The first things most visitors notice are the mailboxes and small post office, not a typical sight attached to a country lodge. And then, as you enter Sea Ranch Lodge, it's not uncommon, depending on the time of day, to hear a chorus singing, part of a monthly concert conducted by a group of locals, just one of the cultural events held almost daily here. This lodge is the community center in the absence of an actual town and, clearly, a popular hangout for residents. You can eavesdrop on the local gossip, listening to them recounting the day with each other at the bar. You'll soon feel like a fellow inhabitant of the ranch.

Usually when you think about driving Highway 1 from San Francisco, the direction is south toward Carmel, Big Sur, the Central Coast. But to get to Sea Ranch Lodge, you're heading north, maneuvering some extreme twists and turns on 100 miles of this famous road. Your reward for these automotive gymnastics is the famous view of craggy cliffs with Pacific waves crashing against them. The serenity bonus: virtually no one else is around.

The Sea Ranch development takes up a large part of that coastline, while never violating it: 7,000 acres, in fact, with more than 2,000 homes clustered around redwood and Douglas fir forests, cypress hedgerows and hiking trails. It all started in 1964 when Oceanic Properties, Inc. bought the land and commissioned the architectural firm of Moore, Lyndon, Turnbull and Whitaker, notably architect Joseph Esherick, to build the first structures, all with natural materials, "living

lightly" on the land, respecting and fitting into nature. Four years later, the sleek, wooden central building expanded into this 17-room lodge, also assuming a light footprint; just walk out to the cliffs and look back, and the buildings appear to recede and meld with the trees.

Inside, the style is simple and clean with light wood planks on the floors and walls, custom woodwork headboards, closets and desks, mid-century Modern chairs, artisan ceramics, tiles, woven pieces, and colorful lighting fixtures—making for a distinctive aesthetic. Large picture windows capture views of the property's ten miles of coastline, with fields of wildflowers extending right to the edge. Wood stoves provide extra warmth for chilly nights. And unless you turn on the Bang & Olufsen Beosound Waterproof speaker for music, the only sounds you hear are the wind, waves, and seagulls. (There are no TVs.)

Guests who want more space than a lodge suite has to offer can also temporarily take up residence through the Sea Ranch Living program in one of 12 freestanding houses available to rent, located between one to eight miles from the lodge. Among them, four are recent additions, including Shanti

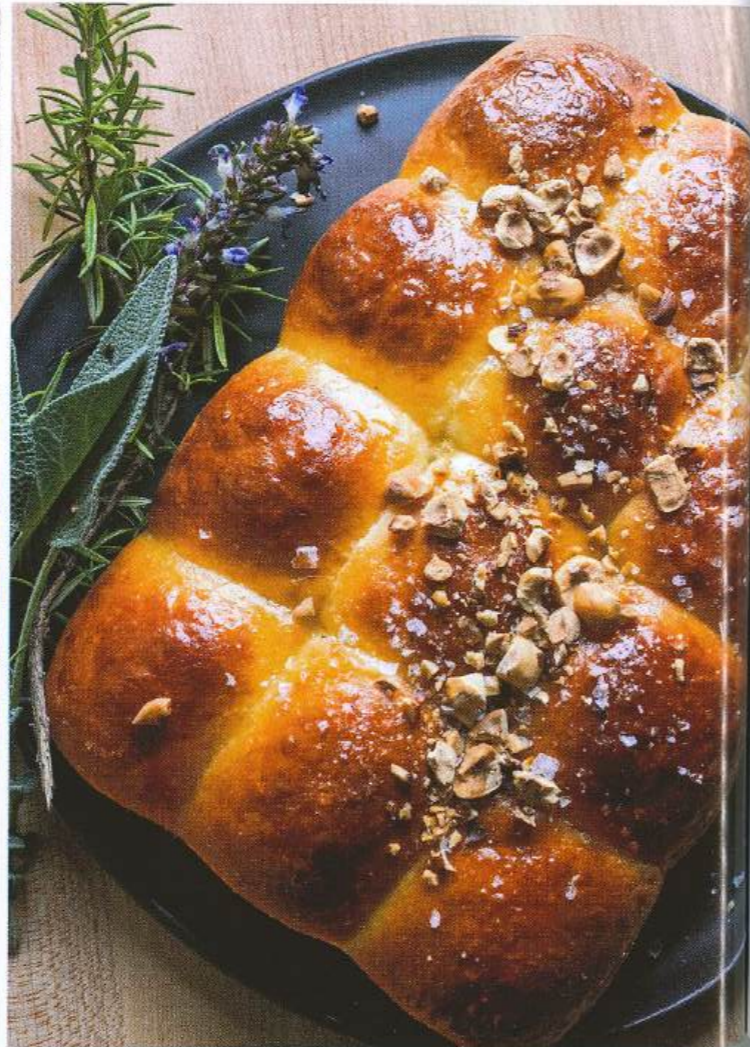
Opening page and this page: The minimalist architecture of California's Sea Ranch Lodge was designed to blend into the landscape. Glamping ("glamorous camping") events can be organized for up to 200 on The Meadow adjacent to the Lodge overlooking the ocean.



The courtyard of the North Building reveals Sea Ranch's emphasis on the use of natural materials, with plantings melding with, and becoming part of, the architecture itself.



The Solarium in the center of the Lodge is part of the dining space but can also be rented for special events. For many miles, the very geography of the landscape is revealed.



House, a two-bedroom oceanfront house with Japandi design (a subtle melding of Japanese and Scandinavian architectural motifs) and floor-to-ceiling windows. The 25-foot-high gable-roofed one-bedroom Cedar + Skye, designed by architect Ralph Matheson, is furnished with mid-century décor and occupies a site set between massive trees making for absolute seclusion. The renting of these houses also allows for use of the facilities offered to Sea Ranch Living residents including pools, pickleball and tennis courts, playgrounds, a dog park, and private beaches.

All guests of the ranch have access to the culinary facilities: the Dining Room for dishes with locally sourced ingredients such as Honey Glazed Duck Breast with beet puree, braised red cabbage, pickled berries, and toasted hazelnuts; tours of the Farm, where livestock are raised and many ingredients for the restaurant are grown; and the new Gastro-Driven Journeys-immersion activities guided by foragers through the verdant ecosystem around the lodge. Currently on the boards: hunts to find, identify, and responsibly harvest species of wild mushrooms along with a tasting and a combined art project/tasting with harvested local purple sea urchin. Fermentation workshops and seaweed foraging are next.

While serenity prevails, other activities beckon, notably wandering the walking trails and the beaches, especially

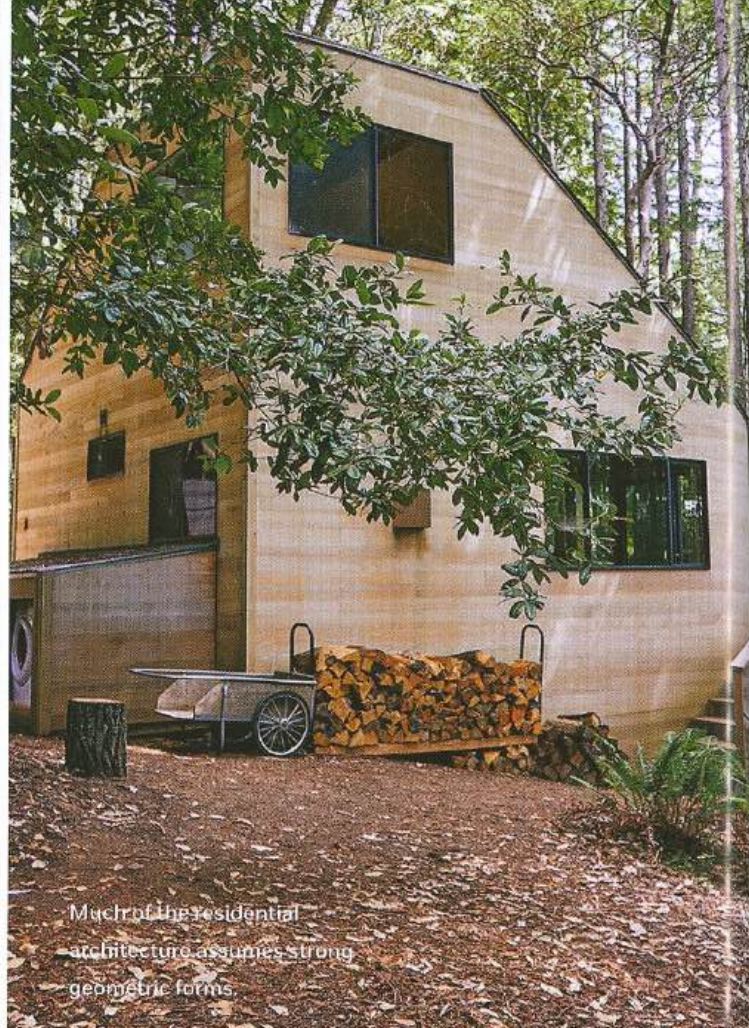
Black Point Beach, reachable by an exhilarating circular wood staircase that leads from a 50-foot cliff, or taking a Wildflower Walk among blazes of color. Golfers can take advantage of the nine-hole Sea Ranch Links just north of the lodge (just beware that the wind might carry your drives far); those who admire fanciful architecture can visit the wood and stone Sea Ranch Chapel which is shaped like a pair of jaunty, conical hats, while providing a destination for meditation.

Often the most popular activity, though, is to just take a chair on the lawn and stare out at the rocks and the waves. Occasionally, there's also a surprise: 20,000 gray whales travel between Baja California and the Bering Sea every year. Lucky guests will see a few of them swim by. ■

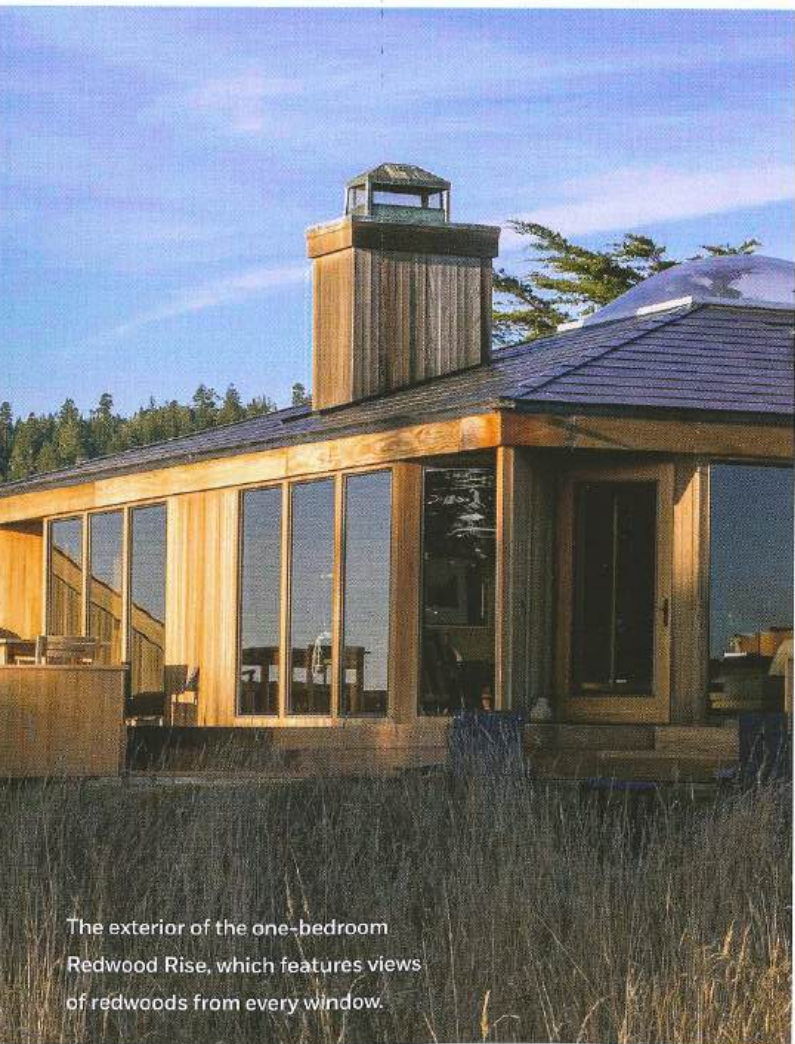
Top, left to right: Seasonal ingredients are grown at The Farm, but a specially constructed tunnel allows produce, such as lettuce, arugula, and kale, to grow year-round; oyster mushrooms grown at The Farm; wildflowers surround the Lodge, with Farm Manager Katrina Coffman conducting regular Wildflower Walks; The Farm's hens, with their own "chicken fortress," provide eggs for the Lodge. Opposite, left to right: Dishes created for The Dining Room menu utilize ingredients currently raised on The Farm and available locally; bakery goods are produced in-house.



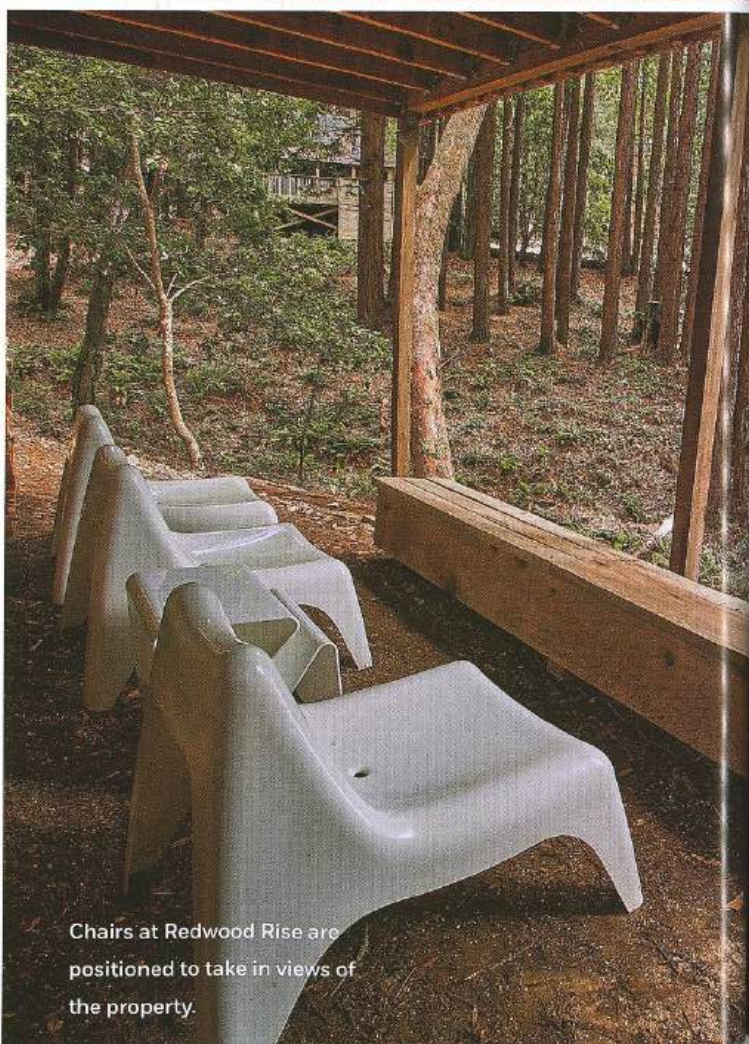
The interior of the two-bedroom Shanti House, one of the newest houses to rent through the Sea Ranch Living portfolio.



Much of the residential architecture assumes strong geometric forms.



The exterior of the one-bedroom Redwood Rise, which features views of redwoods from every window.



Chairs at Redwood Rise are positioned to take in views of the property.